



Twentieth-Century Churches

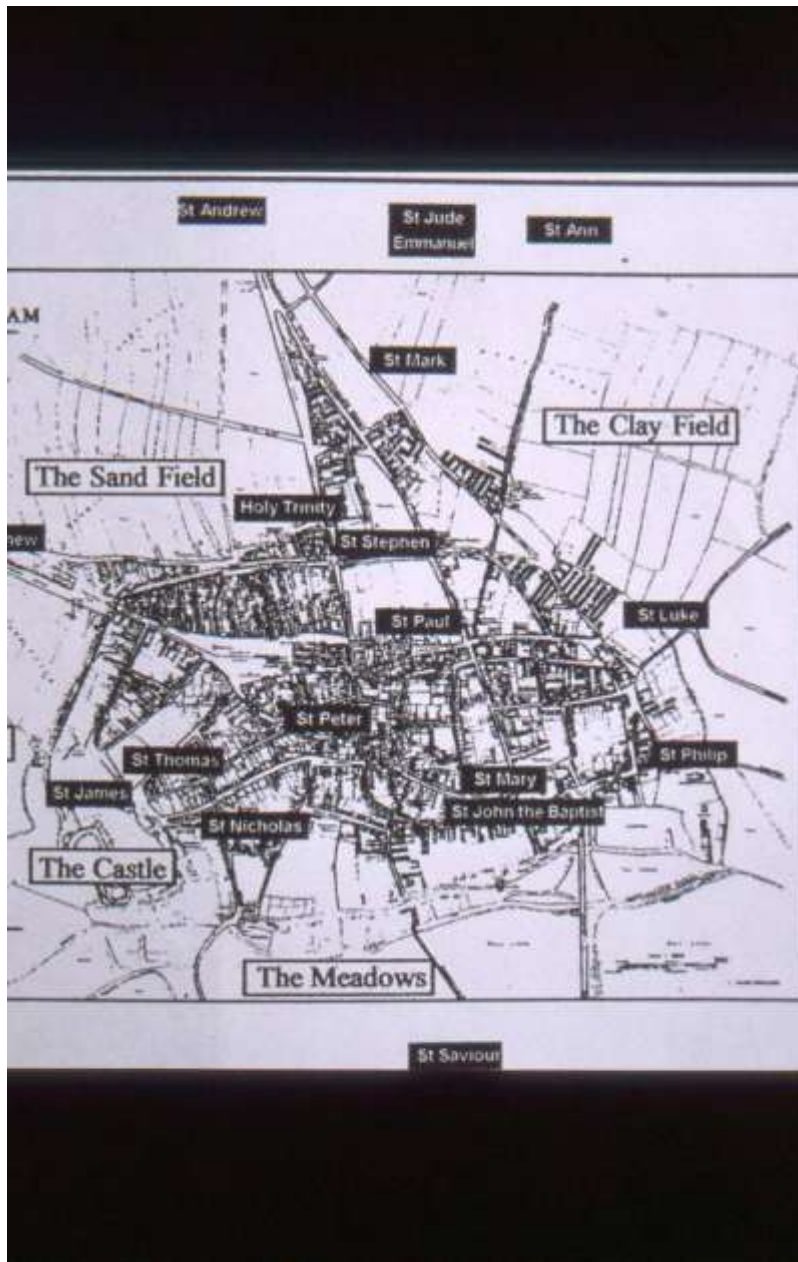
Church History Project
Training Day
Ravenshead
19 November 2011

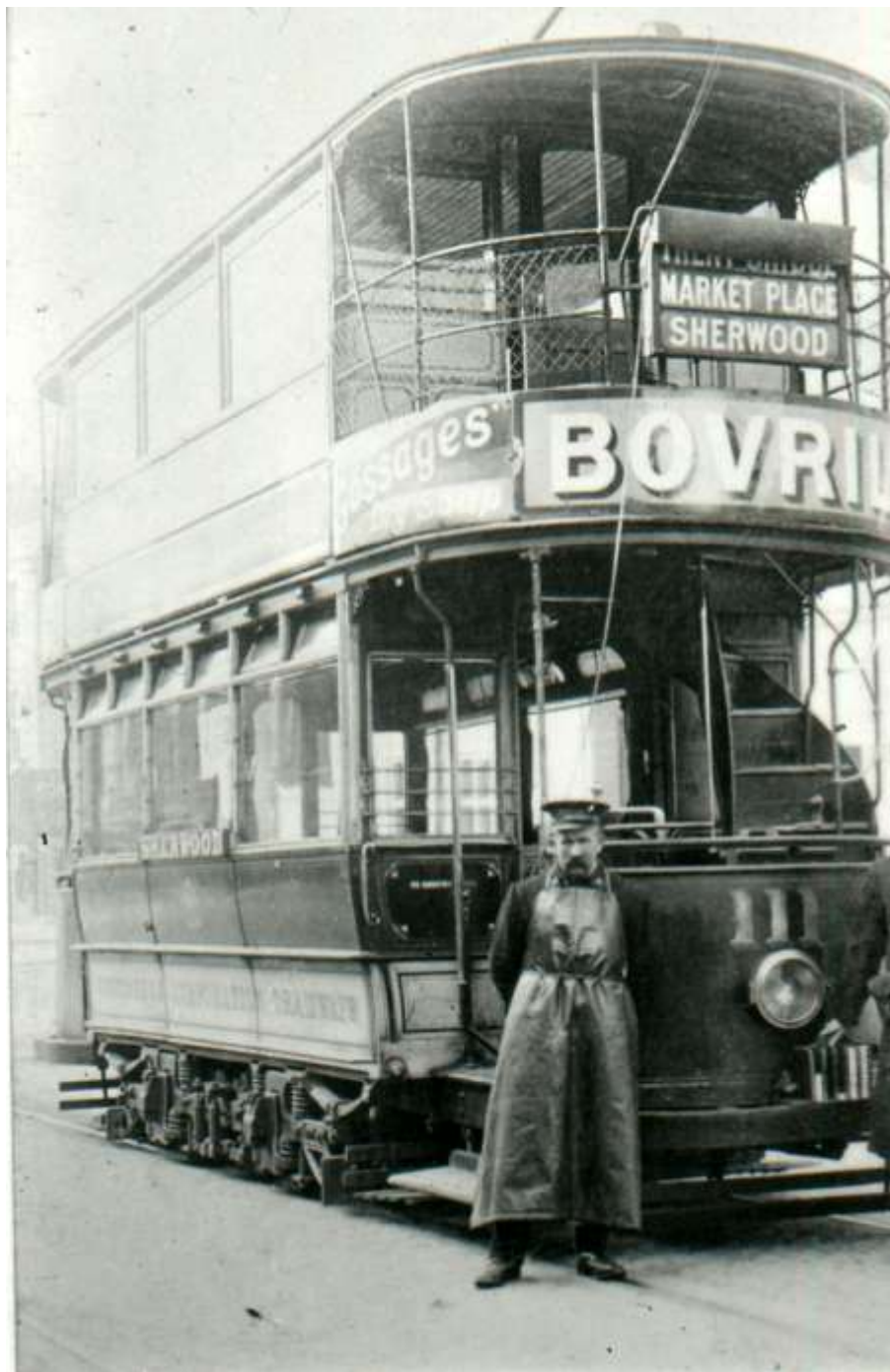
Pre-World War I

- Sneinton St Alban 1887
- Bulwell St John 1885
- Radford St Michael 1885
- Radford All Souls 1887
- Hyson Green St Stephen 1898
- Basford St Aidan 1904
- Huthwaite All Souls 1903
- Forest Town St Alban 1911
- Kirkby in Ashfield St Thomas 1903
- Kirkby in Ashfield St Wilfrid 1908
- Kirkby Woodhouse, St John 1906
- Lady Bay All Hallows 1906

St Alban







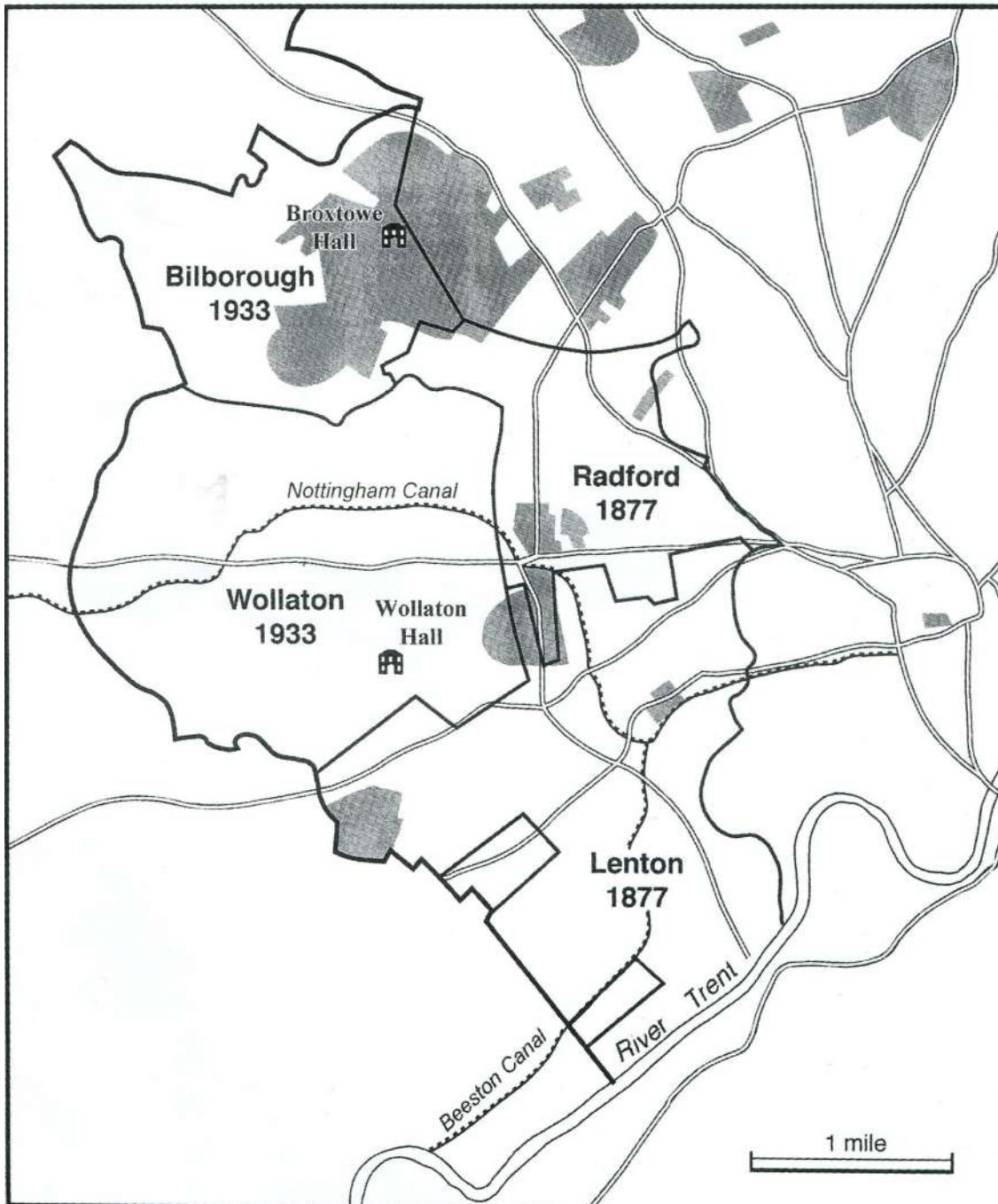


2540

INTERIOR, VICTORIA STATION, NOTTINGHAM.









Lost Nottingham churches

- St James's Standard Hill
- St Paul's George Street
- Holy Trinity
- St John the Baptist, Leenside
- St Matthew
- St Mark
- St Stephen's, Bunkers Hill
- St Luke
- St Ann (although replaced)
- St Thomas
- St Philip
- Emmanuel (also replaced)
- St Bartholomew
- St Catharine's has been sold



St Saviour



All Saints



Inter-war Nottingham churches

- Aspley, St Margaret 1935
- Sneinton, St Cyprian 1935
- Porchester, St James 1935
- Sherwood, St Martin 1937
- Lenton Abbey, St Barnabas 1938
- Wollaton Park, St Mary 1938







Nottingham churches 1945-

- Bestwood St Matthew 1959
- Bestwood St Philip 1976
- Bilborough St John 1959
- Bilborough St Martin (part) 1972
- Broxtowe, St Martha 1952
- Carlton St John 1955
- Clifton St Francis 1957
- Clifton Holy Trinity 1959
- Colwick St John 1951
- Radford, All Souls (rebuilt) 1976
- Wilford Hill St Paul 1960
- Woodthorpe St Mark 1962
- Rise Park 1971





Welcome to
St Martin's !



Mansfield

- *St Peter and St Paul*, 11th century.
- *St John the Evangelist*, 1856, H.I. Stevens.
- *St Mark*, 1897. *St Lawrence*, foundation stone laid 28 October 1908 and opened 1909.
- *St. Aidan*, Victoria Street, Mission Church attached to St. Mark's, built in 1908. Closed 31 August 1981.
- *St Augustine*, 1928



New Communities

- Newstead, St Mary, 1928
- Ollerton, St Paulinus, 1931
- Toton, St Peter, 1954
- Inham Nook, St Barnabas, 1957
- Ravenshead, St Peter, 1972



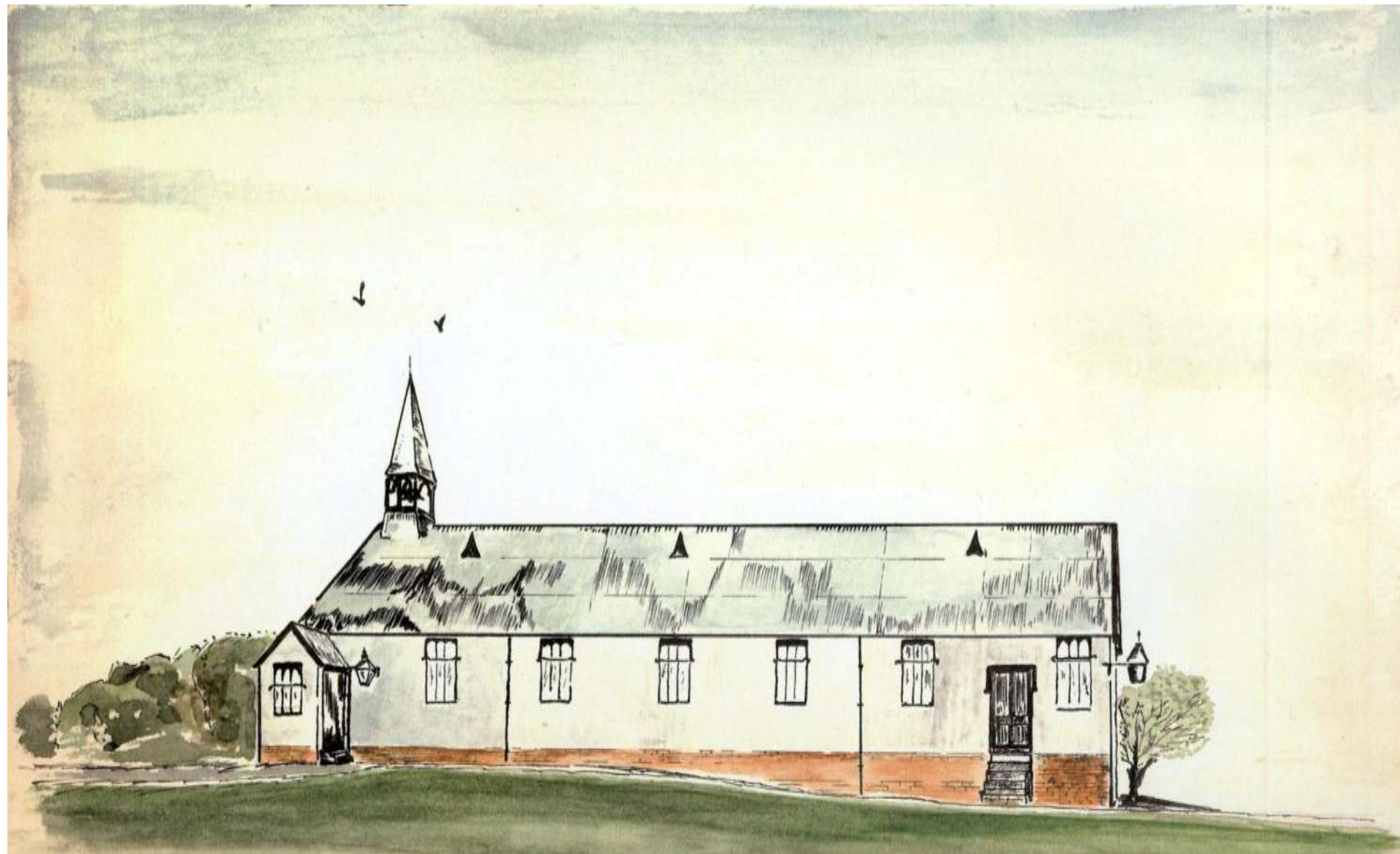












ST LUKES : ISON GREEN.
c. 1889

THE "IRON CHURCH".

H.O.H.
1958

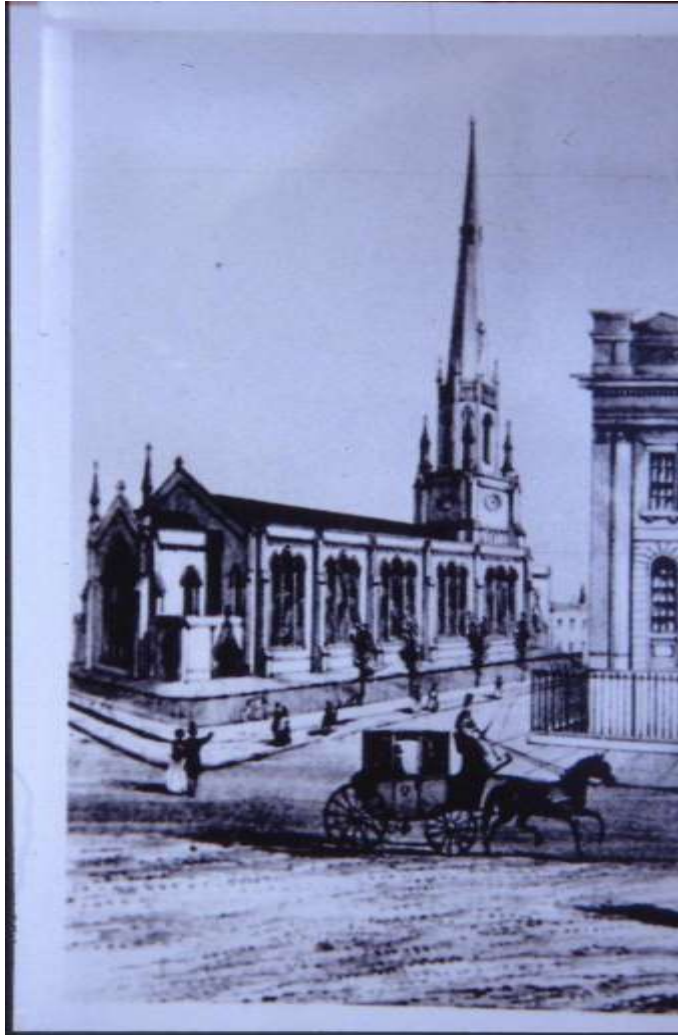






St. Matthew's Church, Nottingham.









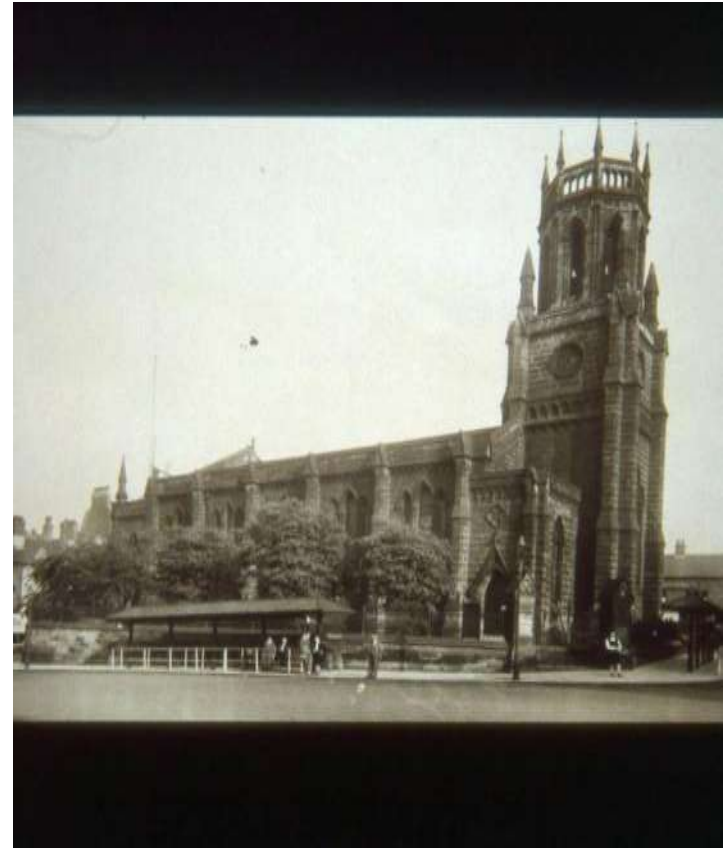
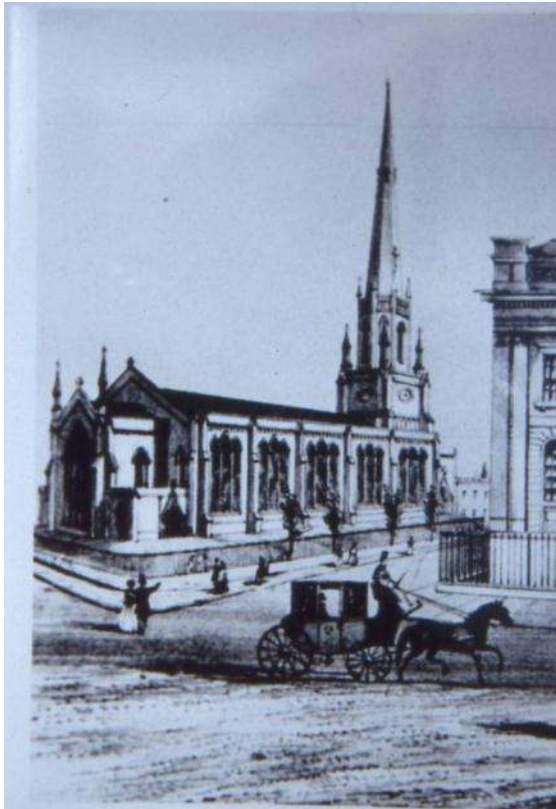








Holy Trinity



St Matthew and St Mark



St Luke



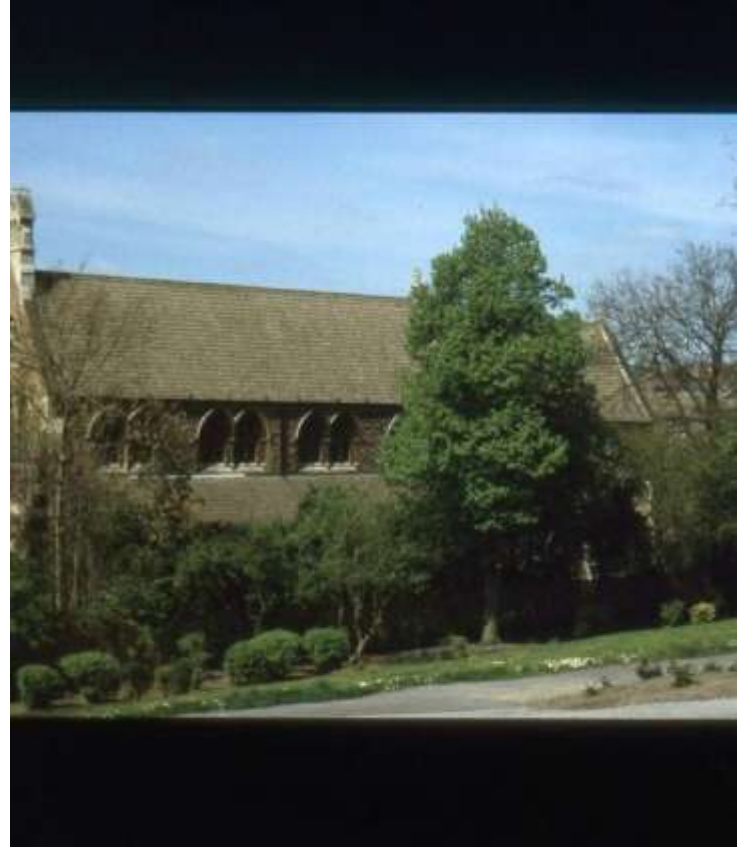
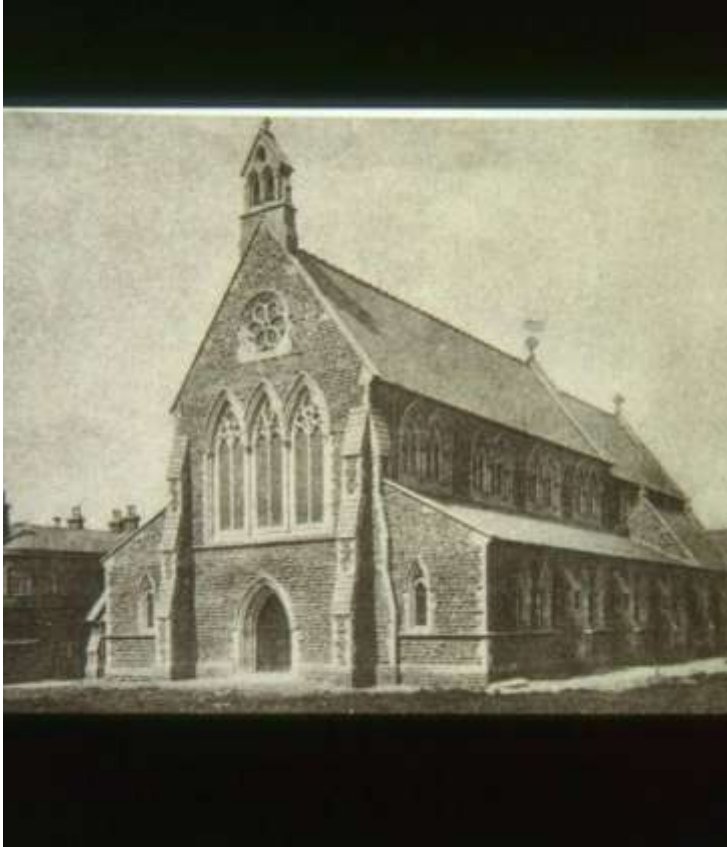
St Ann



St Stephen, Hyson Green



St Catharine



St Bartholomew



